

Addendum

S2ARCHITECTURE

DATE: August 7, 2024
S2 PROJECT #: 224034
PROJECT NAME: Whistler Municipality Alternative Solutions

ADDENDUM # 02

This addendum amends the specifications and drawings during the tender period, prior to the submission of tenders, to clarify, revise, add to or delete from the contract documents. This addendum shall form part of the contract documents and the amendments covered are to be carried out in accordance with the contract documents.

This Addendum No. 02 is issued to answer RFI's submitted by the general contractor and to identify changes to the sprinkler drawings.

1. Sprinkler

- a) Refer to attached Addendum – 2 pages
- b) Refer to attached Revised sprinkler drawings – 2 pages

2. RFI Questions:

Q1. Can you please provide a detailed drawing/cross-section showing the fastening procedure for the James Hardie lap siding and trims to the metal furring strips you have specified?

A) **The fastening procedure should be coordinated with James Hardie to ensure proper attachment in accordance with the manufacturer's standards.**

Q2. Clarification on previous Addendum#01 question "Are we to assume all existing floor packages meet 45min fire rating?". The question was if the floor packages existing currently meet a 45min fire rating. **In other words, should the GC encounter areas in the project that do not meet a 45min fire rating, will the GC be responsible for the cost to install a 45min fire-rated assembly?**

A) **If areas are found to not meet this 45min requirements the GC is responsible to coordinate the scope with the Architect and client to determine the next steps. GC will not be responsible for the cost.**

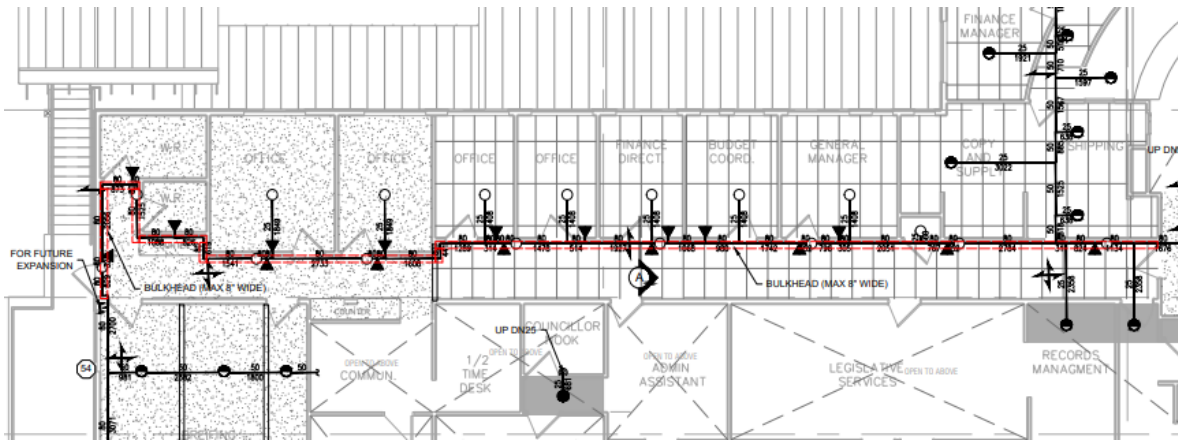
End of Addendum # 02

Whistler Municipal Hall

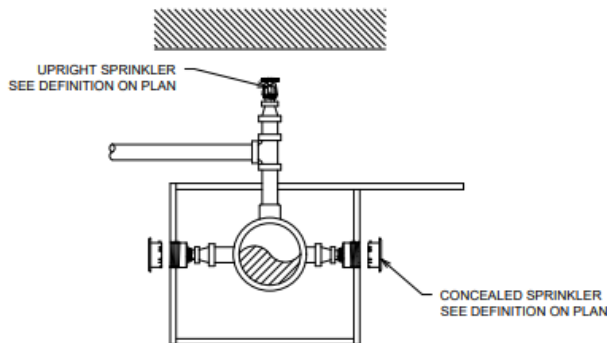
August 6 2024

Fire Sprinkler System IFC & Tender Rev #2

- Install main and architectural bulk head in the corridor Level 2. Maximum permitted bulkhead width is 8” in area indicated below



- Install back to back concealed horizontal sidewalls for coverage in the offices and corridors. Protect concealed combustible spaces above T-bar ceiling with upright sprinklers as indicated in below section A-A.



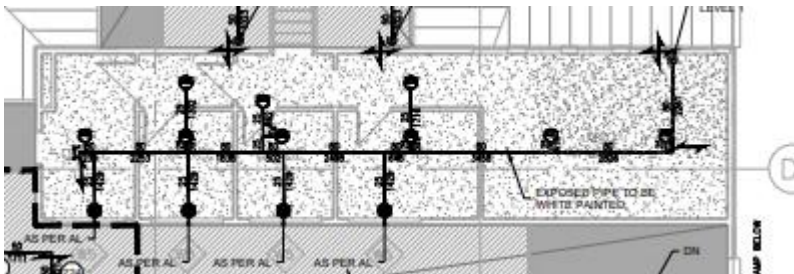
SPRINKLER IN SOFFIT
DETAIL A-A



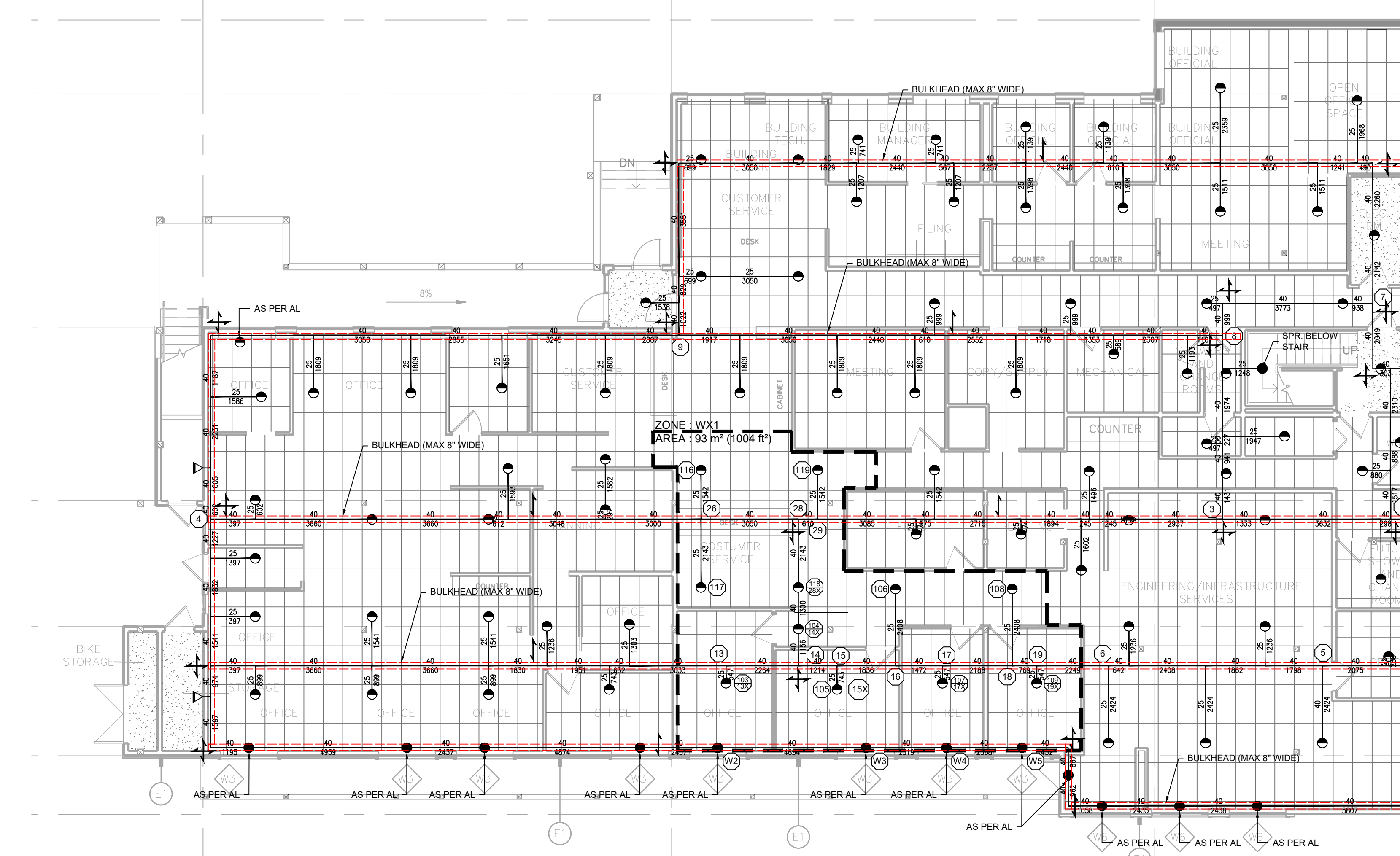
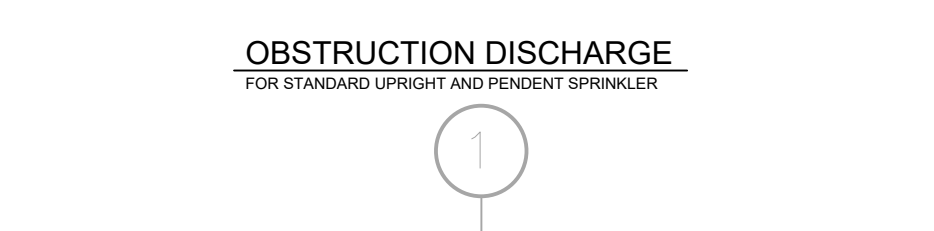
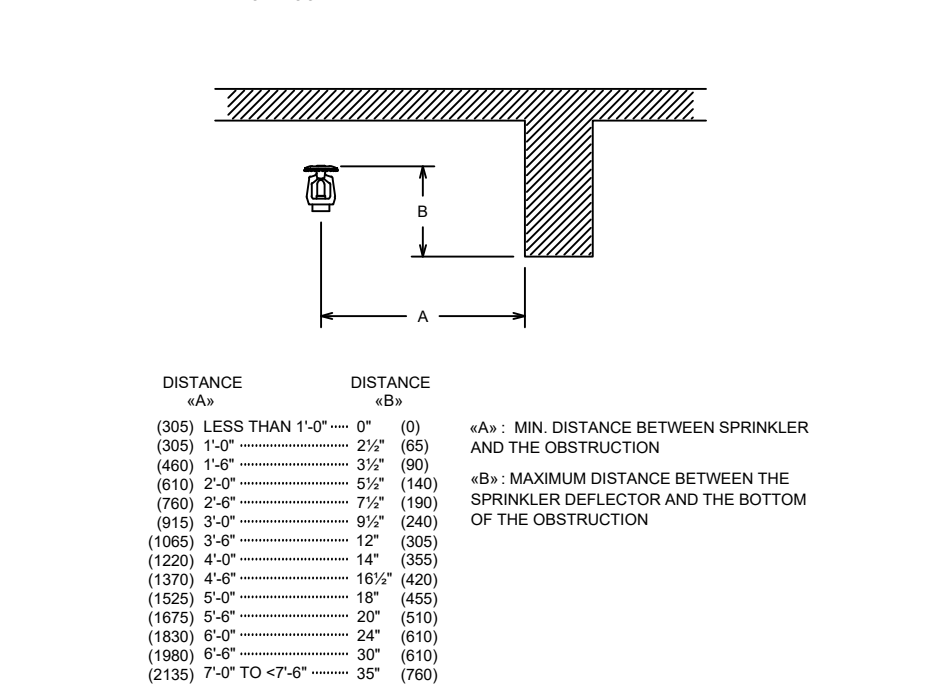
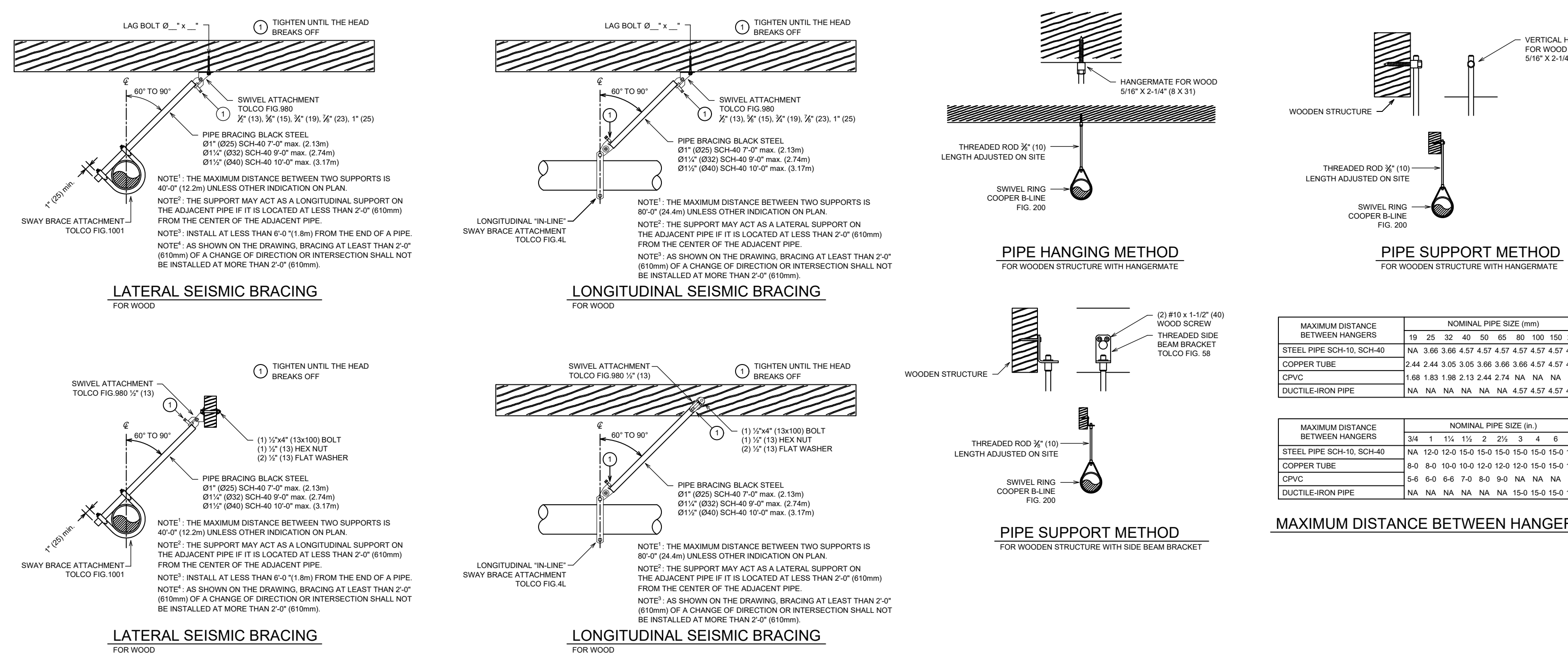
- Allow for architectural bulkheads to install sprinkler lines on Level 1. Coordinate final locations with building structure and available space above T-Bar ceiling.



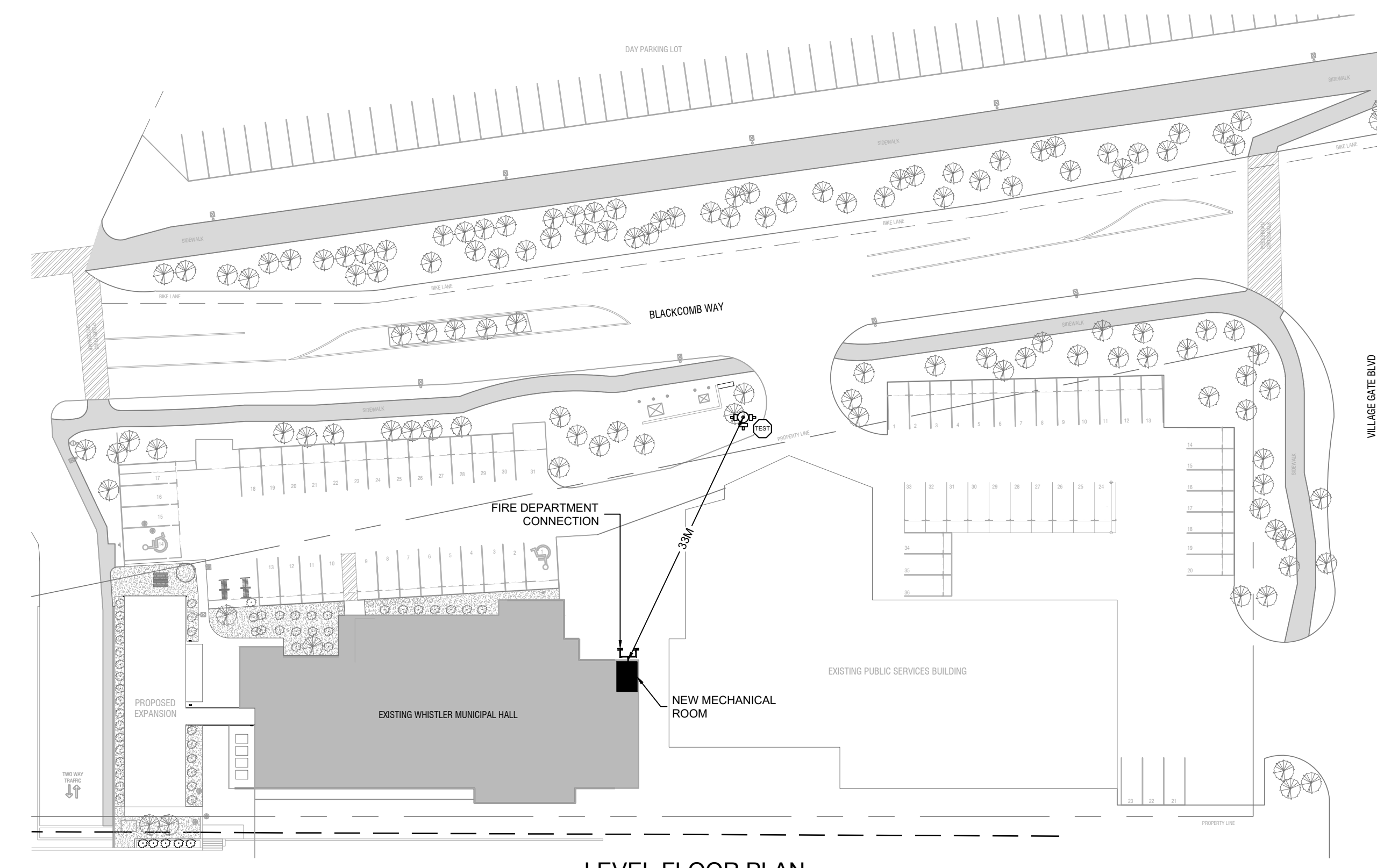
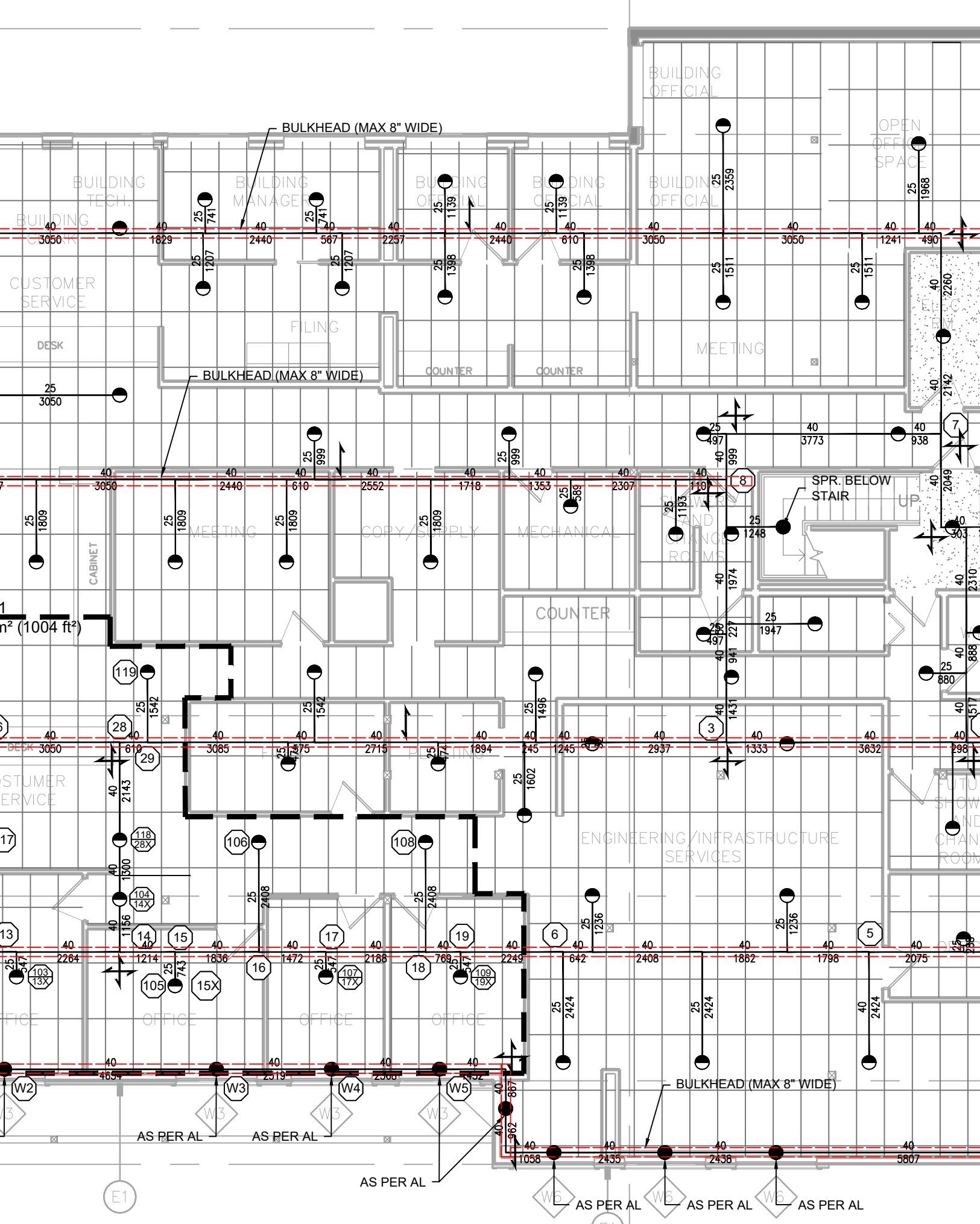
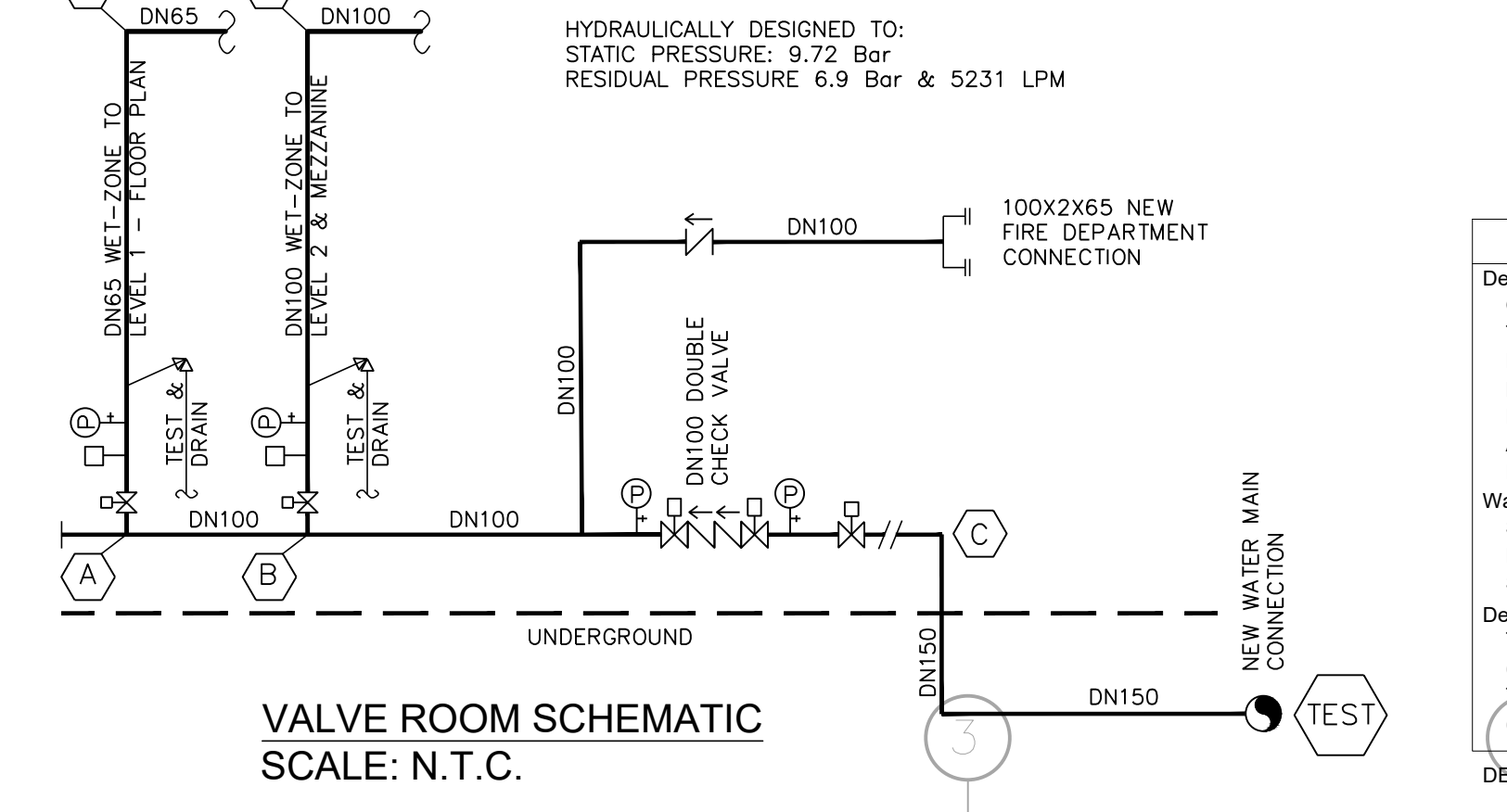
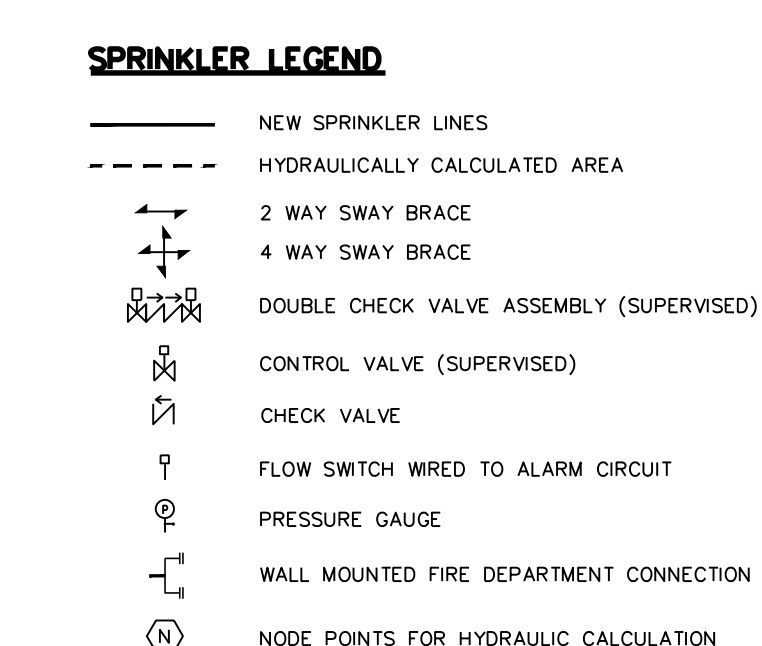
- Install Exposed steel painted piping on mezzanine level as indicated below



- Provide offer as per Revision # 2 Issue for tender and construction dated 24-08-03.
- Coordinate sprinkler location with onsite conditions of the ceiling layout.
- It is mandatory for contractors to do site visit to familiarize themselves with on site conditions prior of submitting the offer
- All questions shall be submitted to engineer in writing prior of submitting offer
- Contractor to build the bulkheads and paint the piping white as indicated.



LEVEL 1 - SPRINKLER LAYOUT
SCALE: 1:100



Hydraulic Information / Level 1/ Wet System

Design Basis	LIGHT HAZARD / NFPA 13
Occupancy	N/A
Total Sprinklers	15
Number Of Sprinklers Calculated	80.6
K-Factor	4.1
Design Density	93
Area of Application (SqM)	379
Hose Allowance (LPM)	2043.3
Water Supply Information At Time Of Design	
Static Pressure(Bar)	9.72
Residual Pressure(Bar)	6.89
Supply Flow(LPM)	5231
Design Calculations	
Total Demand Flow(LPM)	2043.3
(Including Hose Allowance)	
Total Demand Pressure(Bar)	8.0
(Including Hose Allowance)	

DESIGN AREA REDUCED AS PER NFPA 13 (2013) 11.2.3.2.3.1

NOTES:

THIS FIRE SPRINKLER SYSTEM HAS BEEN DESIGNED WITH COMPLIANCE PONTM GROUP ALTERNATIVE SOLUTION REPORT DATED 2024-04-05 FOR WHISTLER MUNICIPAL HALL FIRE LIFE SAFETY UPGRADE PROJECT. THE PROTECTED AREAS ARE IDENTIFIED IN THE ALTERNATIVE SOLUTION REPORT.

THE SPRINKLERS ARE OMITTED FROM ATTIC AND COMBUSTIBLE OVERHANGS. THE PROTECTED AREAS ARE IDENTIFIED IN THE ALTERNATIVE SOLUTION REPORT.

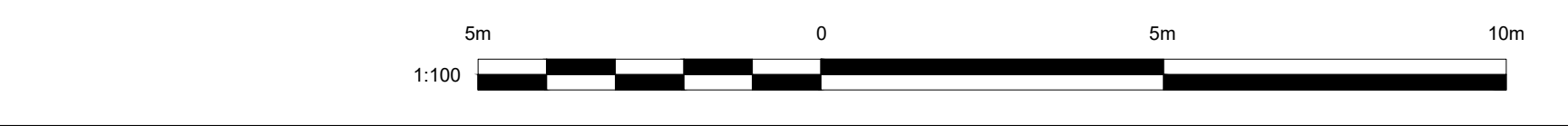
THE AREAS WITH PROVIDED COVERAGE ARE DESIGNED TO NFPA 13 (2013) STANDARD.

- DESIGN NOTES:**
- SCOPE OF WORK IS TO INSTALL SPRINKLERS IN EXISTING BUILDING TO MEET NFPA 13 (2013), BCBC (2012) AND AUTHORITY HAVING JURISDICTION'S REQUIREMENTS.
 - DESIGN CRITERIA:
ORDINARY HAZARD FOR ALL STORAGE, LIGHT HAZARD FOR OFFICE AREA, CLASSROOMS, COMMON AREAS.
 - WATER INFORMATION:
RECEIVED FROM VIKING 2024-04-19
HYDRANT LOCATION: LFD116 (IN FRONT OF PUBLIC SERVICES BUILDING ON BLACKCOMB WAY)
STATIC PRESSURE: 9.72 BAR
RESIDUAL PRESSURE: 6.9 BAR AT 5231 L/MIN FLOW
 - ALL SPRINKLERS AND EQUIPMENTS WILL BE ULC LISTED.
 - SEISMIC SWAY BRACES WILL BE INSTALLED IN ACCORDANCE WITH NFPA 13.
 - PIPE HANGERS WILL BE INSTALLED IN ACCORDANCE WITH NFPA 13.
 - MATERIAL
- PIPES DN25:
- BLACK STEEL, SCHEDULE 40, THREADED
 - PIPES DN32 AND OVER:
- BLACK STEEL, SCHEDULE 10, GROOVED
- CONTRACTOR TO COORDINATE SPRINKLERS LOCATION WITH ON SITE CONDITIONS OF THE CEILING LAYOUT
 - IT IS MANDATORY FOR CONTRACTOR TO DO DETAILED SITE VISIT PRIOR OF SUBMITTING THE OFFER
 - ALL QUESTIONS SHALL BE SUBMITTED TO ENGINEER IN WRITING PRIOR OF COMPLETING THE OFFER
 - CONTRACTOR TO BUILD AND PAINT BULKHEAD.
 - CONTRACTOR TO PAINT PIPING IN WHITE AS INDICATED.

Level 1 - Sprinkler Legend

Symbol	Manufacturer	SIN/Model	Quantity	K-Factor	Type	Response	Orifice	Note	Temperature
○	-	-	00	5.6	UPRIGHT	Quick	15mm (1/2")	-	93°C/200°F
●	-	-	182	5.6	UPRIGHT & CONCEALED PENDENT	Quick	15mm (1/2")	-	93°C/200°F
◐	-	-	13	5.6	CONCEALED PENDENT	Quick	15mm (1/2")	-	93°C/200°F
◑	-	-	00	5.6	HSW	Quick	15mm (1/2")	-	93°C/200°F
◒	-	-	02	5.6	DRY HSW	Quick	15mm (1/2")	-	68°C/155°F

Total=197

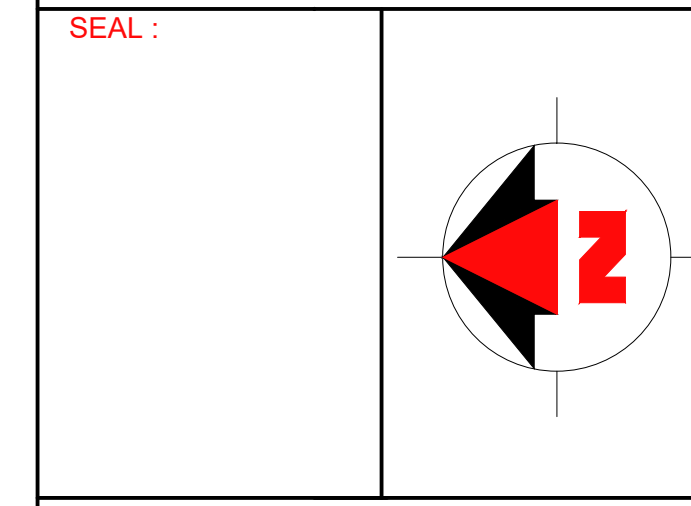


REV	DESCRIPTION :	DATE :
#1	ISSUE FOR TENDER & CONSTRUCTION	24-05-03
#2	ISSUE FOR TENDER & CONSTRUCTION	24-08-03

This drawing as an instrument of service is the property of Novota Engineering Ltd. and may not be reproduced without the firm's permission. All information shown on the drawing is for the use in this specific project only and shall not be used otherwise without written permission from this office. Contractors shall verify and be responsible for all dimensions on the job and this office shall be informed of any discrepancies and variations shown on this drawing. Do not scale drawings.

INSTALLED BY :

SEAL :



NOVOTA ENGINEERING
 EGBC Permit to practice No. 1000520
 23351 117B Ave
 Maple Ridge, BC V2X 0B9
 TEL: (604) 767 8709
 www.novotaengineering.com
 e-mail: info@novotaengineering.com

Whistler Municipal Hall
 4325 Blackcomb Way,
 Whistler, BC V8E 0X5

FIRE PROTECTION SPRINKLER SYSTEM

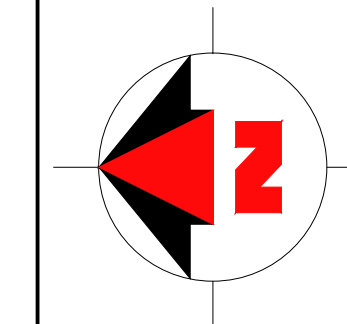
DRAWN BY : DP
 CHECKED BY : JN
 SCALE : 1:100
 DATE : 24/04/06
 DRAWING : F-1 OF F-2

REV	DESCRIPTION :	DATE :
#1	ISSUE FOR TENDER & CONSTRUCTION	24-05-03
#2	ISSUE FOR TENDER & CONSTRUCTION	24-08-03

This drawing as an instrument of service is the property of Novota Engineering Ltd. and may not be reproduced without the firm's permission. All information shown on the drawing is for the use in this specific project only and shall not be used otherwise without written permission from this office. Contractors shall verify and be responsible for all dimensions on the job and this office shall be informed of any discrepancies and variations shown on this drawing. Do not scale drawings.

INSTALLED BY :

SEAL :



NOVOTA ENGINEERING

EGBC Permit to practice No. 1000520

23351 117B Ave
Maple Ridge, BC V2X 0B9

TEL: (604) 767 8709
www.novotaengineering.com
e-mail: info@novotaengineering.com

Whistler Municipal Hall

4325 Blackcomb Way,
Whistler, BC V8E 0X5

FIRE PROTECTION SPRINKLER SYSTEM

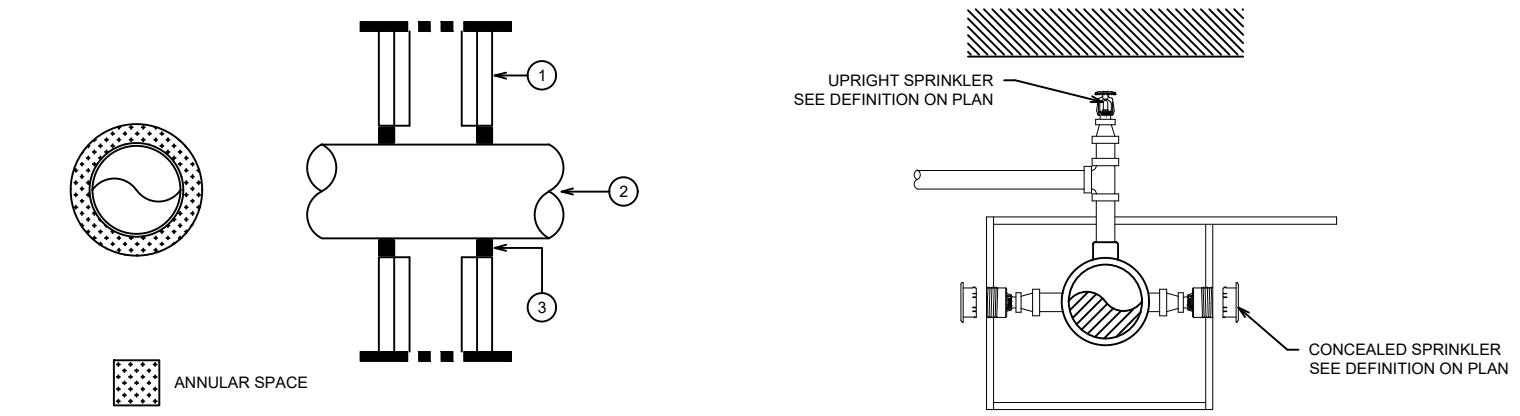
DRAWN BY : DP

CHECKED BY : JN

SCALE : 1:100

DATE : 24/04/06

DRAWING : F-2 OF F-2



- TYPE OF BARRIER: 1H OR 2H FIRE-RATED GYPSUM WALL.
- PENETRATING ELEMENT: STEEL PIPE.
- SEALANT: USE HILTI FS-ONE MAX SEALANT AT LEAST 5/8" (16 MM) THICK IN THE ANNULAR SPACE ON BOTH SIDES OF THE WALL.
- SLEEVE: NOT REQUIRED.
- FILL MATERIAL: NOT REQUIRED.
- ANNULAR SPACE OF SEALANT: FROM 0" (POINT OF CONTACT) TO 2-1/4" (57 MM).
- FIRE RESISTANCE: FROM 1H TO 2H DEPENDING ON THE WALL COMPOSITION.

Reflected Plan - Symbol Legend

[Symbol]	EXISTING CEILING IS TO REMAIN IN PLACE. THE GENERAL CONTRACTOR IS RESPONSIBLE FOR ENSURING THAT CEILING TILES ARE NOT DAMAGED DURING THE CONSTRUCTION PROCESS.
[Symbol]	INDICATES ACOUSTIC CEILING PANELS IN T-BAR SUSPENSION SYSTEM. CEILING PATTERN TO BE CENTERED IN ROOM U.N.O.
[Symbol]	INDICATES GYPSUM CEILING ON FURRING AND C-CHANNEL SYSTEM.
[Symbol]	INDICATES NO CEILING IN SPACE. OPEN TO FLOOR/ROOF JOISTS ABOVE.

Level 2 - Sprinkler Legend

Symbol	Manufacturer	SIN/Model	Quantity	K-Factor	Type	Response	Orifice	Note	Temperature
○	-	-	17	5.6	UPRIGHT	Quick	15mm (1/2")	-	93°C/200°F
●	-	-	60	5.6	UPRIGHT & CONCEALED PENDENT	Quick	15mm (1/2")	-	93°C/200°F
◐	-	-	16	5.6	CONCEALED PENDENT	Quick	15mm (1/2")	-	93°C/200°F
◑	-	-	17	5.6	CONCEALED HSW	Quick	15mm (1/2")	-	93°C/200°F
			Total = 110						

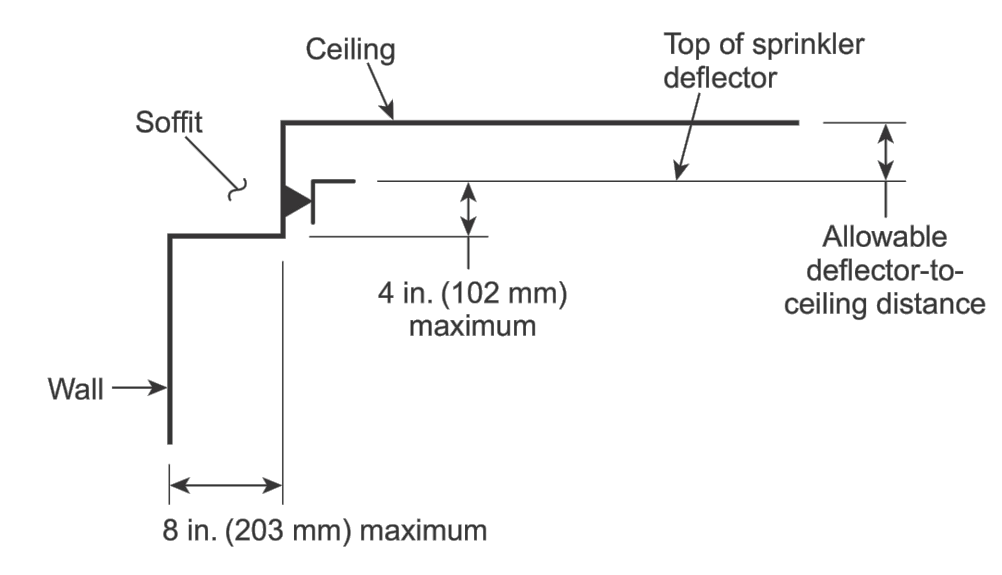


FIGURE A.8.7.4.1.3.2 Location Sidewalls with Respect to Soffits - Sidewall in Soffit.

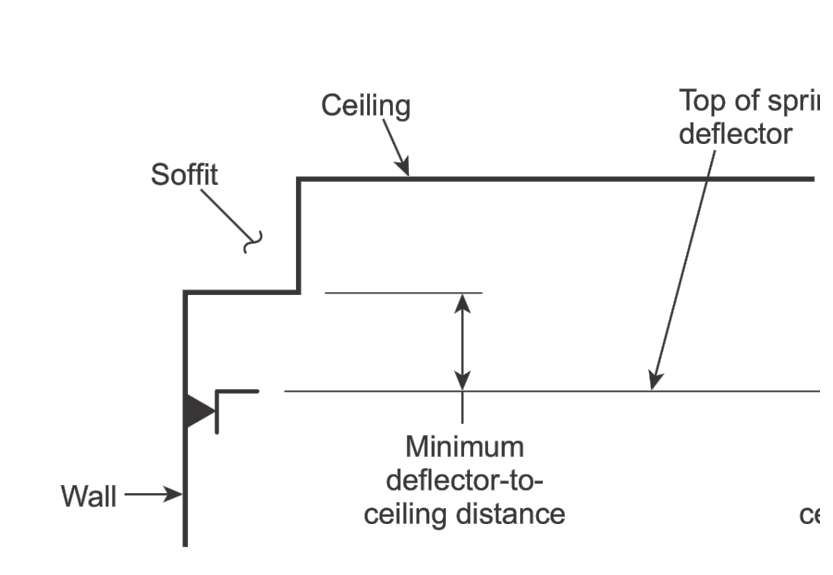


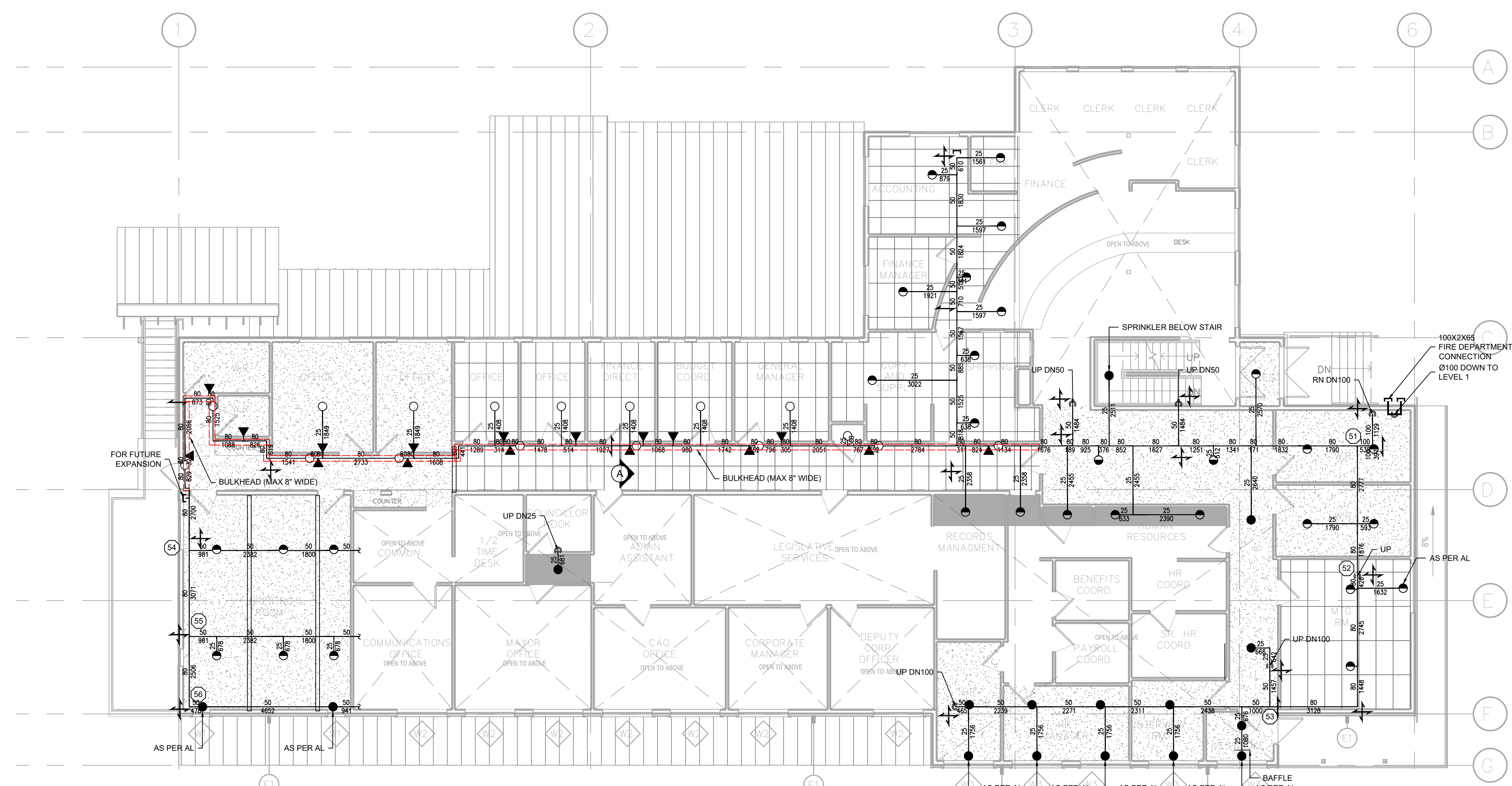
FIGURE A.8.7.4.1.3.3 Location Sidewalls with Respect to Soffits - Sidewall Under Soffit.

Hydraulic Information / Level 2/ Wet System

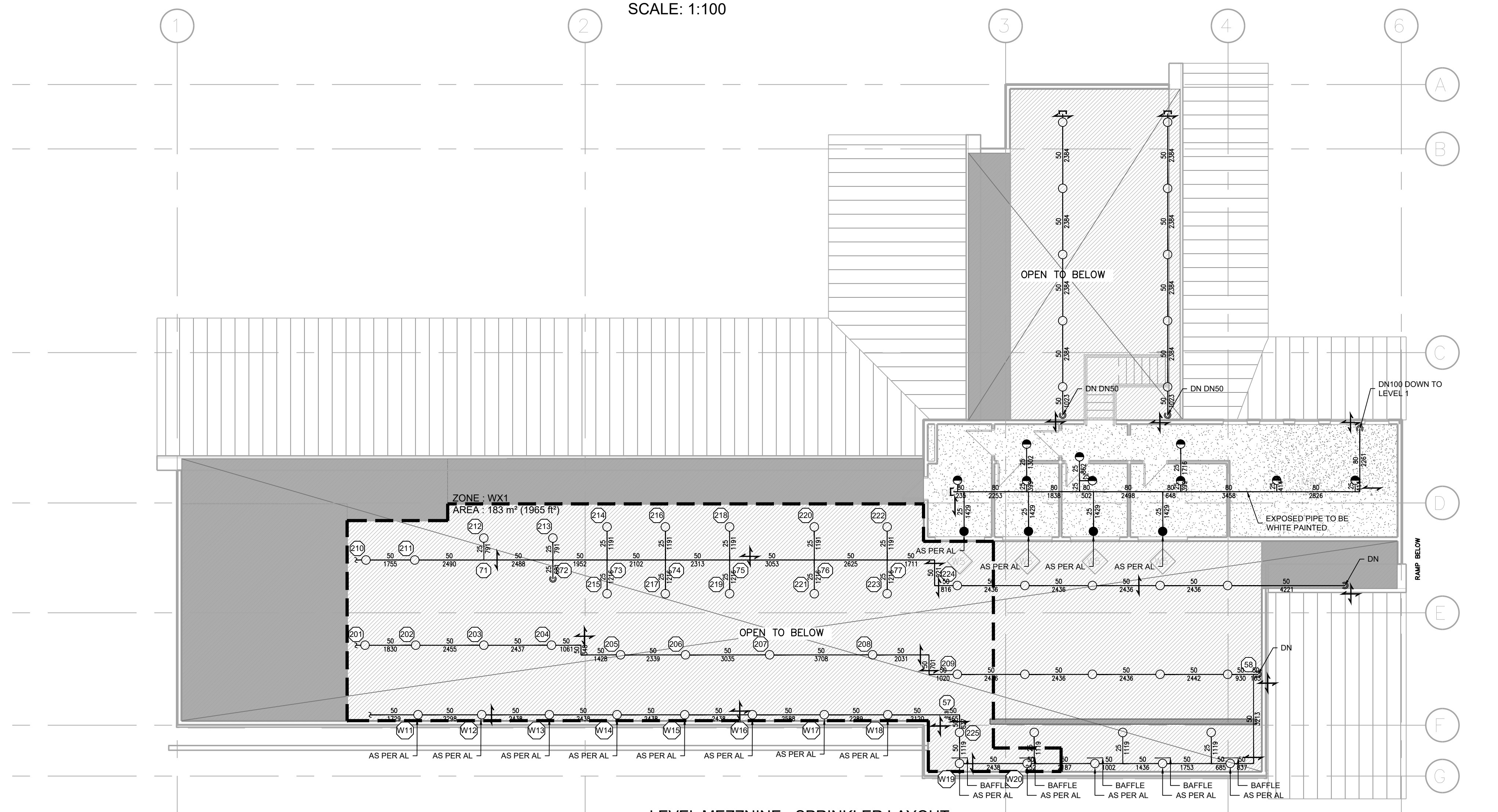
Design Basis	
Occupancy:	LIGHT HAZARD / NFPA 13
Total Sprinklers:	N/A
Number Of Sprinklers Calculated:	35
K-Factor:	80.6
Design Density:	4.1
Area of Application (SqM):	183
Hose Allowance (LPM):	379
Water Supply Information At Time Of Design	
Static Pressure(Bar):	9.72
Residual Pressure(Bar):	6.89
Supply Flow(LPM):	5231
Design Calculations	
Total Demand Flow(LPM):	3737.2
(Including Hose Allowance)	
Total Demand Pressure(Bar):	7.15
(Including Hose Allowance)	

Mezzanine & Height Ceiling - Sprinkler Legend

Symbol	Manufacturer	SIN/Model	Quantity	K-Factor	Type	Response	Orifice	Note	Temperature
○	-	-	59	5.6	UPRIGHT	Quick	15mm (1/2")	-	93°C/200°F
●	-	-	18	5.6	UPRIGHT & CONCEALED PENDENT	Quick	15mm (1/2")	-	93°C/200°F
◐	-	-	04	5.6	CONCEALED PENDENT	Quick	15mm (1/2")	-	93°C/200°F
◑	-	-	00	5.6	HSW	Quick	15mm (1/2")	-	93°C/200°F
			Total = 81						



LEVEL 2 - SPRINKLER LAYOUT
SCALE: 1:100



LEVEL MEZZANINE - SPRINKLER LAYOUT
SCALE: 1:100